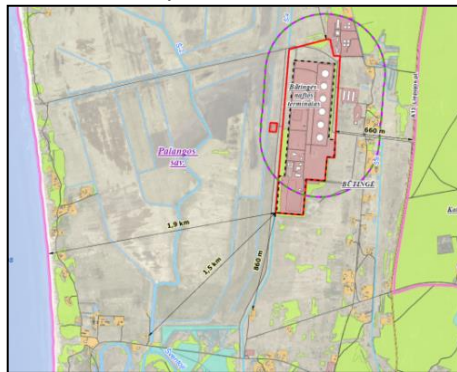


Information for the population who are likely to be affected by a possible accident, and operators of neighboring establishments located in a possibly hazardous area

## GENERAL INFORMATION

<b>Operator</b>	Public Company ORLEN Lietuva
<b>Hazardous establishment</b>	Būtingė Oil Terminal
<b>Address</b>	Public Company ORLEN Lietuva Pipelines and Terminal Operations Subdivision Terminalo kelias 2, 00325 Palanga
<b>Telephone</b>	+37044393459
<b>E-mail address</b>	butinge@orlenlietuva.lt
<b>Website</b>	<a href="http://www.orlenlietuva.lt">www.orlenlietuva.lt</a>

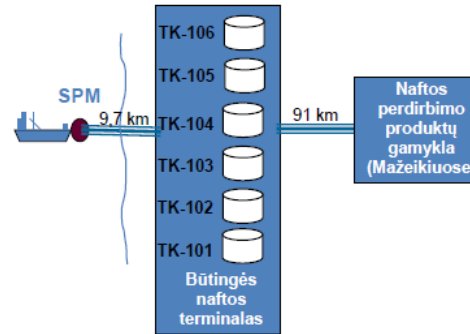
This information has been prepared in line with the provisions of Regulations on Prevention of, Response to and Investigation of Industrial Accidents, and the List of Dangerous Substances and Mixtures, the Description of Established Qualifying Quantities and Criteria for Classifying Substances and Mixtures as Dangerous approved by the 17 August 2004 Resolution No 966 of the Government of the Republic of Lithuania (hereinafter, the Regulations). According to the provisions of the Regulations, Būtingė Oil Terminal, in view of the existing quantities of dangerous substances, is attributed to the upper-tier hazardous establishments that are subject to the application of the Regulations. Safety Report of Hazardous Establishment has been submitted to the Fire and Rescue Department under the Ministry of the Interior.



Būtingė Oil Terminal is situated in the North-West of Lithuania, 2.3 km inshore from the Baltic sea coast, approx. 3 km to the North of Šventoji town, and 1.5 km from the Lithuanian-Latvian border.

## ACTIVITIES

Būtingė Oil Terminal is the reverse import/export terminal for crude oil storage and acceptance onshore from vessels (import) or onto vessels (export). Design capacity of Būtingė Oil Terminal is 14 million tons of crude oil. The hazardous establishment comprises of 6 tanks for storage of crude oil: TK-101, TK-102, TK-103, TK-104, TK-105 and TK-106 (three of 50'000 m<sup>3</sup>, and three of 52'000 m<sup>3</sup>).



## DANGEROUS SUBSTANCES PRESENT IN THE HAZARDOUS ESTABLISHMENT, AND MAIN HAZARD PROPERTIES

Dangerous substance used in Būtingė Oil Terminal is crude oil. Its aggregate state is liquid. Storage conditions – above-ground storage tanks (TK-101 – TK-106).

Maximum quantity of dangerous substances in storage tanks - 306 000 m<sup>3</sup>.



**Crude oil** — highly flammable liquid and vapours easy to ignite by brief contact with an ignition source; if inhaled, its hydrocarbons affect the human body as a drug of abuse, and can cause dysfunction and diseases of the nervous system, cardiovascular, respiratory and digestive systems, with the effects manifested as general narcotic toxicity, headache, weakness, increased fatigue; the substance is carcinogenic, and suspected of causing cancer or being fatal if swallowed and enters airways. Toxic to aquatic life with long-lasting effects.

## THE NATURE AND CONSEQUENCES OF POTENTIAL ACCIDENTS

Two groups of possible accidents in Būtingė Oil Terminal may be distinguished, i.e. accidents involving the offshore facilities, and accidents involving the onshore facilities of the Terminal. Main accident scenarios that are possible involve crude oil spills and fire.

Crude oil spills and release into the environment constitute the major risk to the Terminal employees and nearby population as well as employees of adjacent establishments. In the event of an accident, crude oil vapours and gases, otherwise known as volatile organic compounds (VOCs), may be released into the environment with such vapours and gases being harmful and dangerous to human health and environment, and posing a risk of fire and explosion. In the event of crude oil spills, toxic effects of VOCs on population are possible, whereas in case of fire, the major risk is presented by fire smoke.

**Petroleum vapour and gases (VOC)** – colourless, flammable, explosive and toxic gases. Easy to ignite by contact with sparks and flame. Gases accumulate at lower altitudes, wells, cellars. An explosion may occur from the contact of gas vapour trail with flame or sparks.

Specific signs of intoxication: excitement, dizziness, dilation of the pupil, nausea, salivation, drowsiness (manifested within a few hours), possible loss of consciousness.

**Fire smoke** – a complex mixture of heated air, solid and liquid suspensions, gases, vapours, aerosols. Burning of crude oil and petroleum products may produce the following toxic substances: nitrogen oxide, sulfur oxide, carbon oxide, hydrogen sulfide, solid particles; whereas hydrocarbons, in the event of incomplete combustion, may be converted to aromatic hydrocarbons (benzene, toluene, xylene), etc. Avoid smoke, if noticed. The smoke composition is variable and hard to predict, thus it may cause human suffocation due to the lack of oxygen as well as poisoning with toxic aerosols present.

Specific signs of intoxication: upper respiratory tract and pulmonary edema, laryngospasms and bronchospasms, depressive effects on central nervous system, respiration weakening and increased sensitivity to toxins.

## ACCIDENT CONTROL MEASURES

To ensure prevention of and response to major industrial accidents that may cause immediate or delayed harmful effect on human health and/or the environment, Būtingė Terminal takes care of adequate technical measures, and organizes regular emergency response trainings for emergency services and Terminal staff.

Būtingė Oil Terminal ensures implementation, functioning and continuous improvement of the safety management system, which defines the roles and responsibilities of employees, contains identification and assessment of major hazards, operational controls applied, the procedures of change management and planning for emergencies, monitoring of performance as well as audit and review procedures.

Fire safety status in Būtingė Oil Terminal is continuously supervised by the standby 3<sup>rd</sup> Fire Brigade of Mažeikiai Fire and Rescue Board for Protection of Facilities.

In accordance with Mandatory Notification Procedure to deal with emergencies and their consequences, the Terminal engages emergency services on duty as well as special services with their actions coordinated by the Emergency Operations Center.

## NOTIFICATION IN CASE OF EMERGENCY OR ACCIDENT

1. In the event of an accident, responsible staff of Būtingė Terminal, in view of possibly hazardous area, shall notify by telephone:

- Director of Palanga Municipal Administration and Chief Specialist of Palanga Municipality General Department (responsible for civil protection).
- Responsible employees of AB Palangos vandenys Waste Water Treatment Facilities.

2. Employees in the territory of Būtingė Oil Terminal as well as nearby establishments and residents of surrounding areas are notified by activation of public warning siren sounds and loudspeakers.


3. After the Emergency Commission of Palanga Municipality commences its work, further decisions on public notification and actions shall be made by the Chairman of the Commission, i.e. Director of Municipal Administration.

4. Population is notified in accordance with Būtingė Oil Terminal External Emergency Plan approved by Director of Palanga Municipal Administration and available on the website of Palanga City Municipality at [www.palanga.lt](http://www.palanga.lt) (section 'Civil Protection').

5. The following information on the accident shall be provided:

- the circumstances of the accident (place, time, causes);
- hazardous substances released, and their quantities;
- possible effect on human health and the environment, anticipated territory of spreading, and possible consequences;
- explanation of actions and behavior recommended for the population and the operators of adjacent establishments.

## ACTIONS IN CASE OF EMERGENCY OR ACCIDENT

1. Listen to the notification and follow the instructions.
2. If stay at home is instructed, tightly close the entrance doors, windows, ventilation windows and openings without delay, and switch off the electric appliances as well as turn off the gas.
3. If unpleasant increasing smell of chemicals is noticed, headache and dizziness or nausea develops, put on a respirator for protection against toxic gases and fire smoke; if no respirator is available, put the moistened cotton and gauze tissue, or close your nose and mouth with a wet towel and immediately evacuate from the area of possible contamination. Move in the crosswind direction.
4. It should be noted that the area contamination with gases of hazardous substances and vapour in the open air lasts shorter than, for example, in the forest, so avoid staying in areas with lower movement of air masses.
5. Do not forget your family members and neighbors who may be at risk, ask whether they've heard a notice.
6. Take care of pets, bring animals to the stable, and tightly close the door.
7. In case any urgent medical assistance is needed, call the emergency number: 
8. Follow the instructions and requirements of emergency or special services.
9. In case of any doubt, contact the responsible employee of Būtingė Oil Terminal by **+37046396459** (calls automatically recorded).

## HAZARDOUS ESTABLISHMENT ROUTINE INSPECTIONS

Verification of compliance of the implemented technical, organizational and administrative measures with the requirements of the Regulations, and inspection of Būtingė Oil Terminal as the upper-tier hazardous establishment is conducted at least once every 12 months by a competent authority and state supervisory and control institutions according to approved schedule of inspections.

Approved schedules and amendments thereto are available on the website of Fire and Rescue Department at <http://pagd.lrv.lt>

Last inspection of the establishment was conducted on 11 September 2019.

## DETAILS OF WHERE FURTHER INFORMATION CAN BE OBTAINED

1. Būtingė Oil Terminal Safety Report and more information on AB ORLEN Lietuva Pipeline and Terminal Operations Subdivision and Būtingė Oil Terminal are available on AB ORLEN Lietuva website at [www.orlenlietuva.lt](http://www.orlenlietuva.lt).
2. Būtingė Oil Terminal External Emergency Plan is available on the website of Palanga City website at [www.palanga.lt](http://www.palanga.lt) (section 'Civil Protection'). The plan contains description of actions and measures to be taken to deal with the consequences of an accident at Būtingė Oil Terminal and outside its territory, and notification of the population.



# INFORMATION TO THE PUBLIC ON HAZARDOUS ESTABLISHMENT

## Public Company ORLEN Lietuva Pipelines and Terminal Operations Subdivision BŪTINGĖ OIL TERMINAL

